



- **Changes since previous update:**
 - **A Tornado Watch is in affect until 6 PM CST for MS counties**
 - A cold front located between Hammond and Slidell with storms out ahead of it
 - Widespread 2 to 4 inches of rainfall expected, with locally higher amounts.
 - Several flash flooding warnings
- Temperatures will drop quickly behind the front tonight
 - Overnight lows through the weekend and into early next week will be near to below freezing

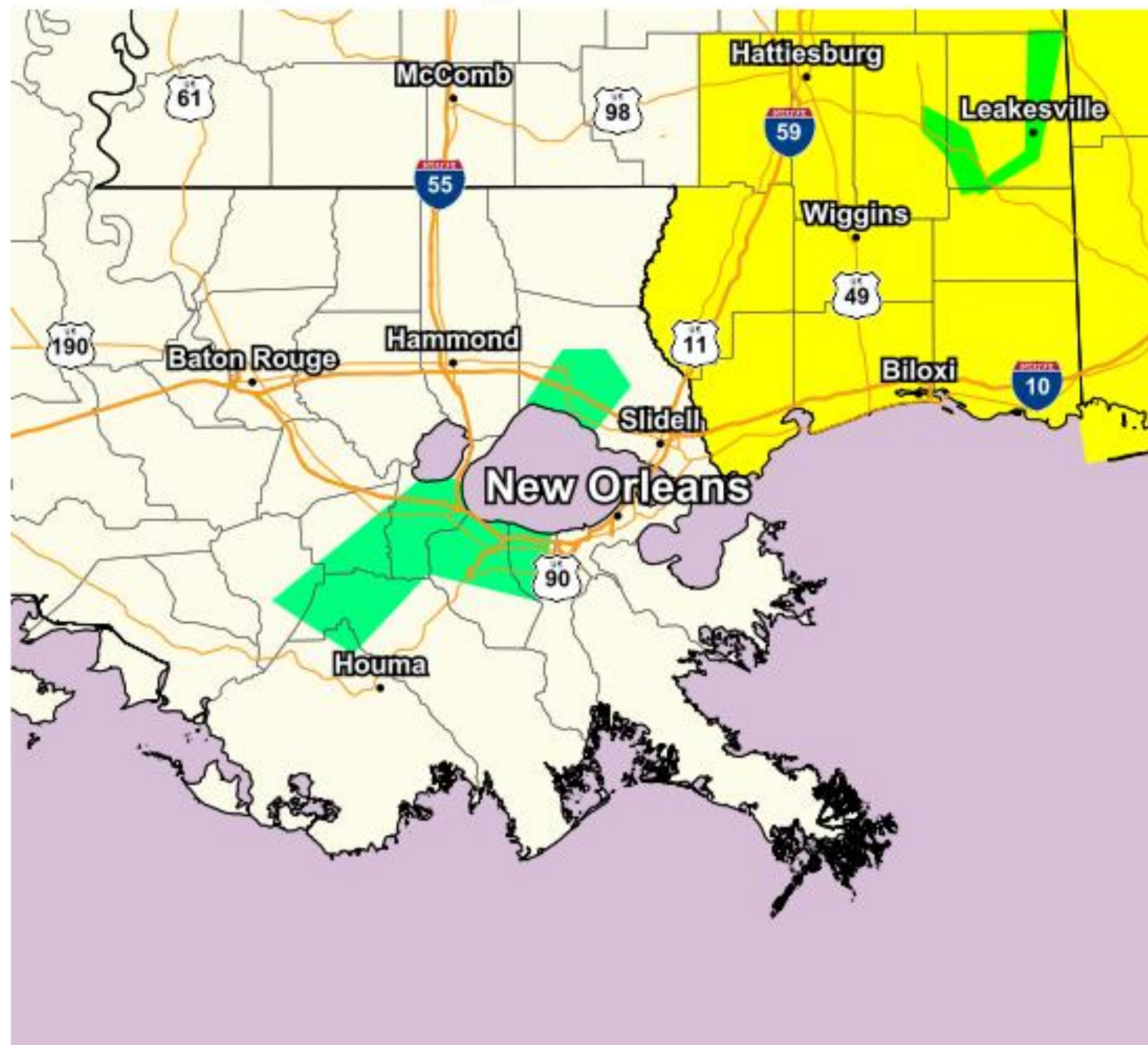
Current Watches/Warnings



National Weather Service
New Orleans/Baton Rouge

Current Watches, Warnings, and Advisories

- Flood Warning
- Tornado Watch
- Flood Advisory
- High Surf Advisory
- Rip Current Statement
- Small Craft Advisory
- Marine Dense Fog Advisory



Graphic Created
February 3rd, 2022
1:20 PM CST

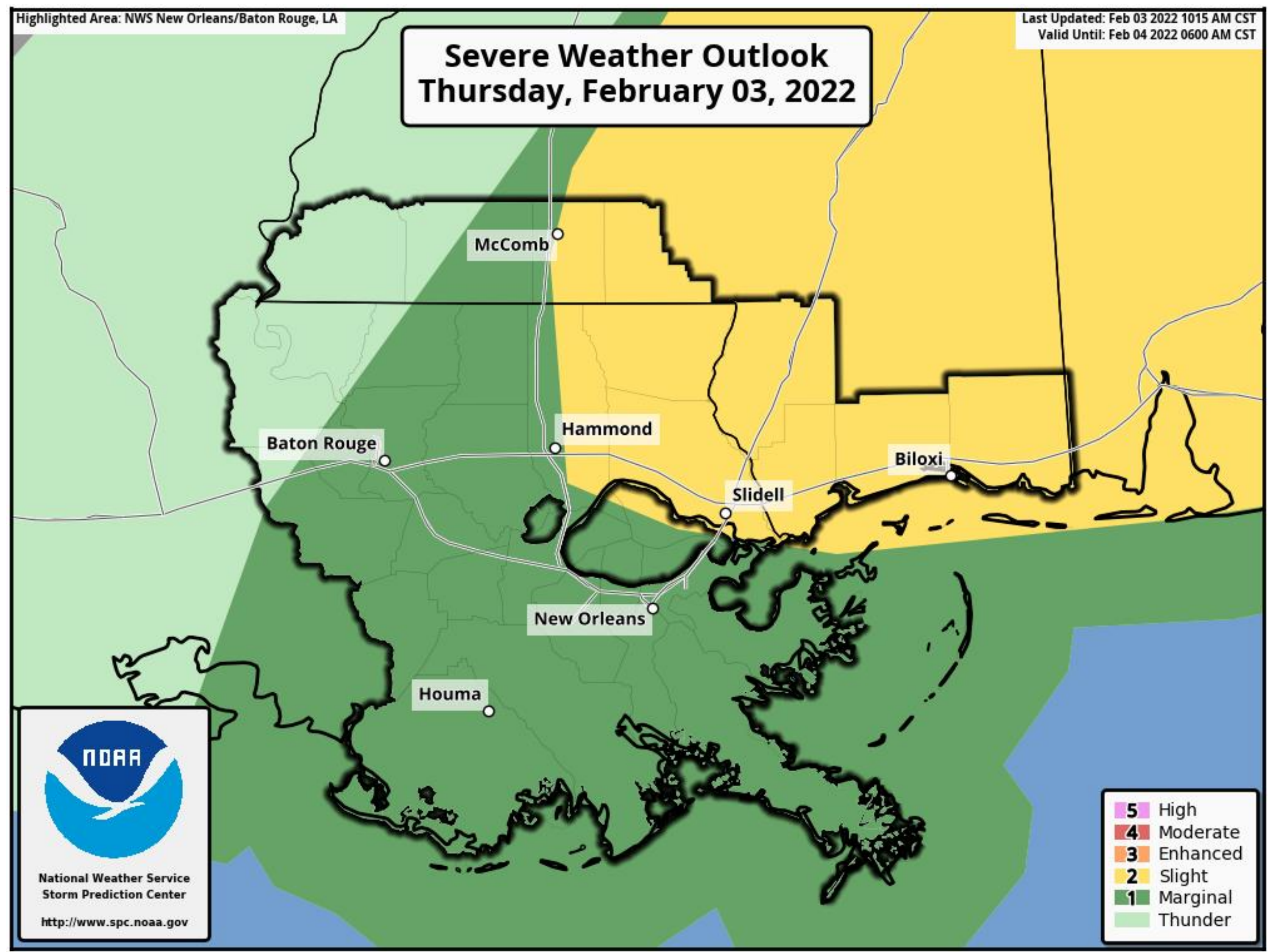
- Isolated tornadoes east of the Pearl River
- Some severe weather still possible for far SE LA
 - Mostly a wind threat
- Flash Flooding is on going

Severe Weather Outlook

Valid Today through early Tonight



National Weather Service
New Orleans/Baton Rouge



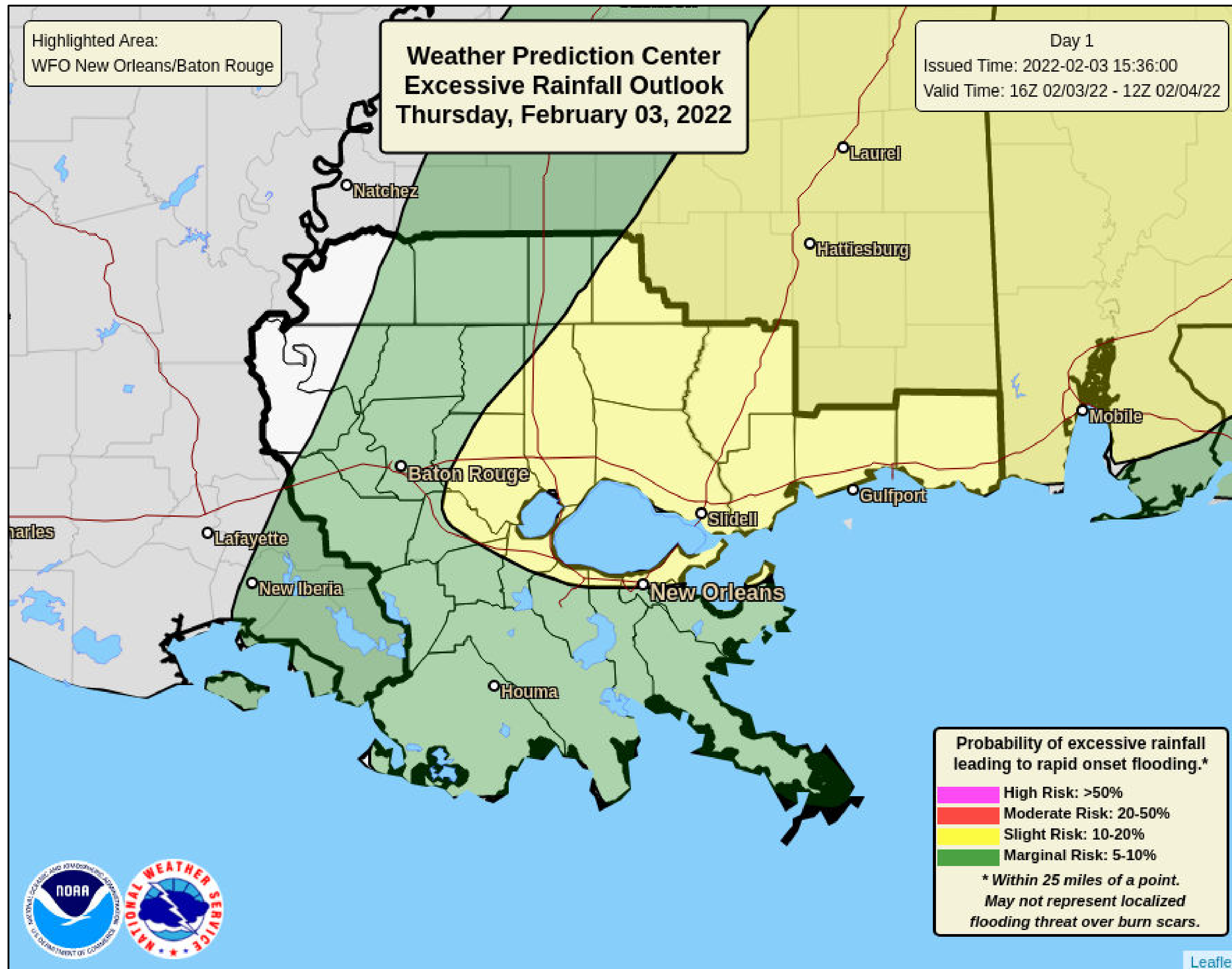
- Marginal Risk for severe weather: Mainly far E LA and S MS
- Main threats will be damaging winds (60+ mph possible)
- A few isolated tornadoes will also be possible
 - These would be brief, spin up tornadoes

Excessive Rainfall Outlook

Today and Tonight



National Weather Service
New Orleans/Baton Rouge



- Light Risk of excessive rainfall across SW MS and immediately adjacent areas of SE LA.
- Rainfall rates of 2"- 4" in stronger storms
- Areas of Flash Flooding
 - Mainly north of Lake Pontchartrain and Southern MS

7-Day Threat Outlook



National Weather Service
New Orleans/Baton Rouge

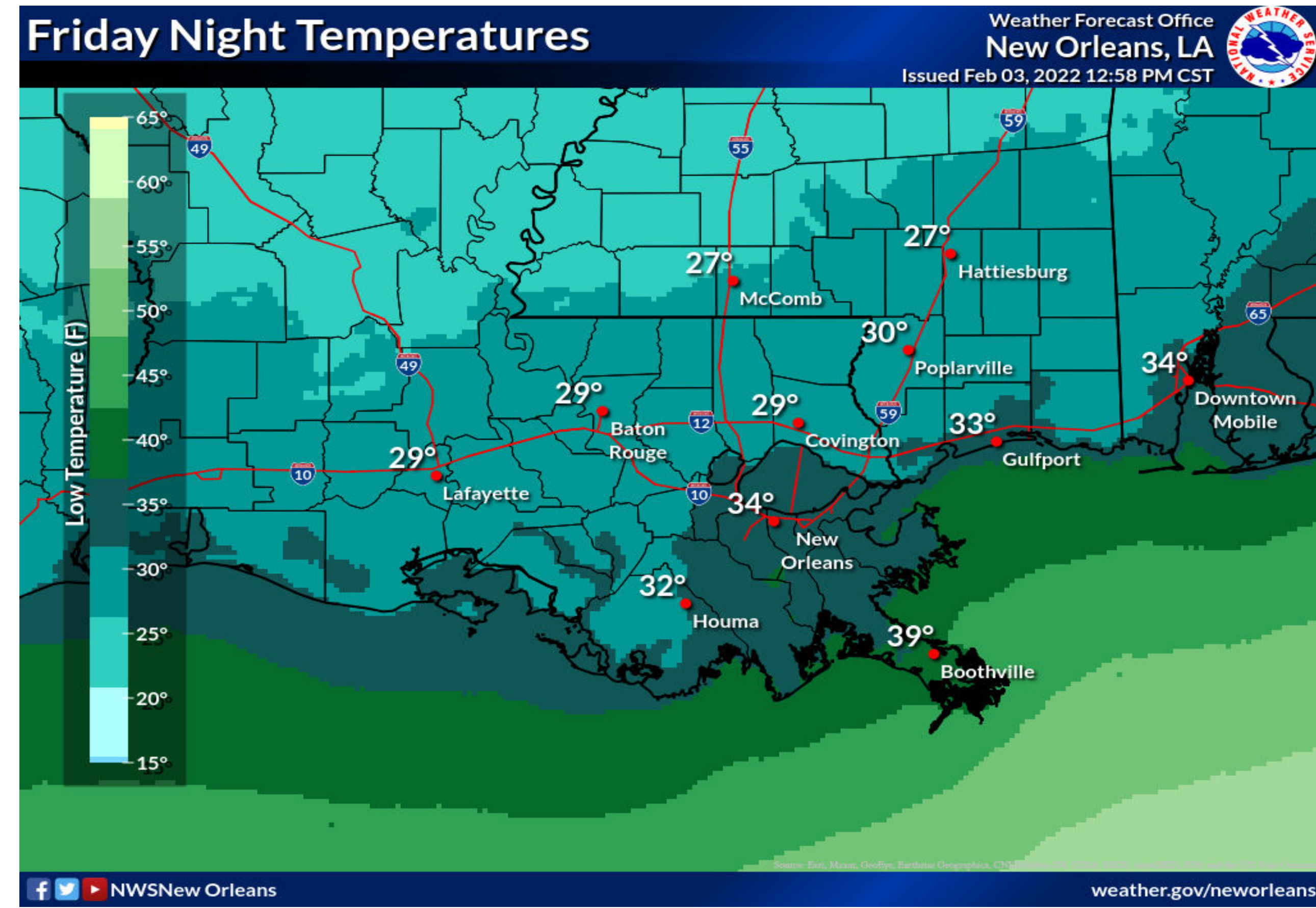
Day/ Threat	Today	Fri	Sat	Sun	Mon	Tue	Wed
Severe Weather							
Flooding							
Threat 3							
Threat 4							



Low Temperatures



National Weather Service
New Orleans/Baton Rouge

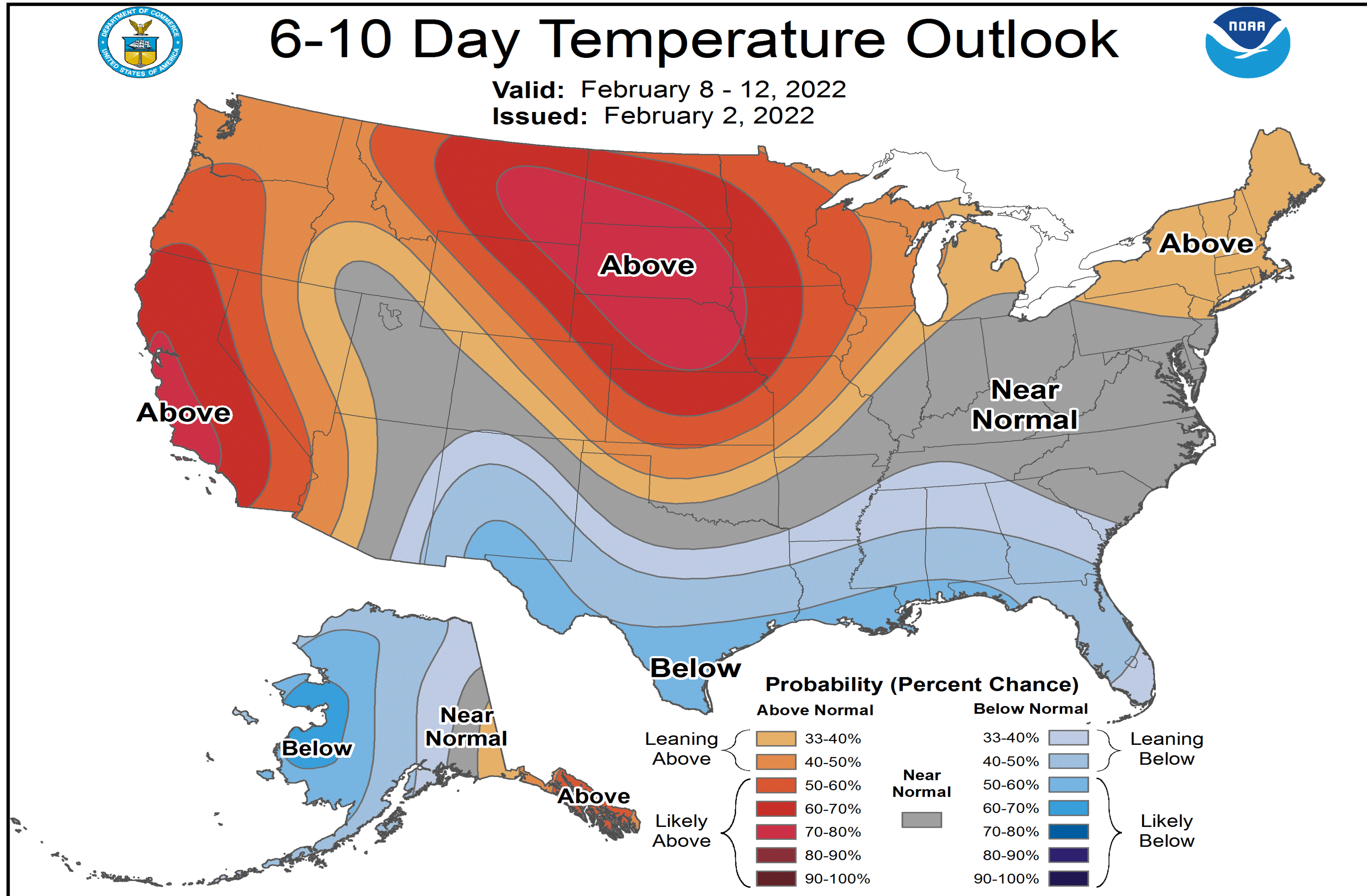


Highs will only be in the 40s on Friday warming in to the 50s for the weekend.

Day 6-10 Temperature Outlook



National Weather Service
New Orleans/Baton Rouge



- Cold overnight lows through the weekend
- Temperatures will be below freezing at night through Monday
- Below normal temperatures into next week

Day 6-10 Rainfall Outlook



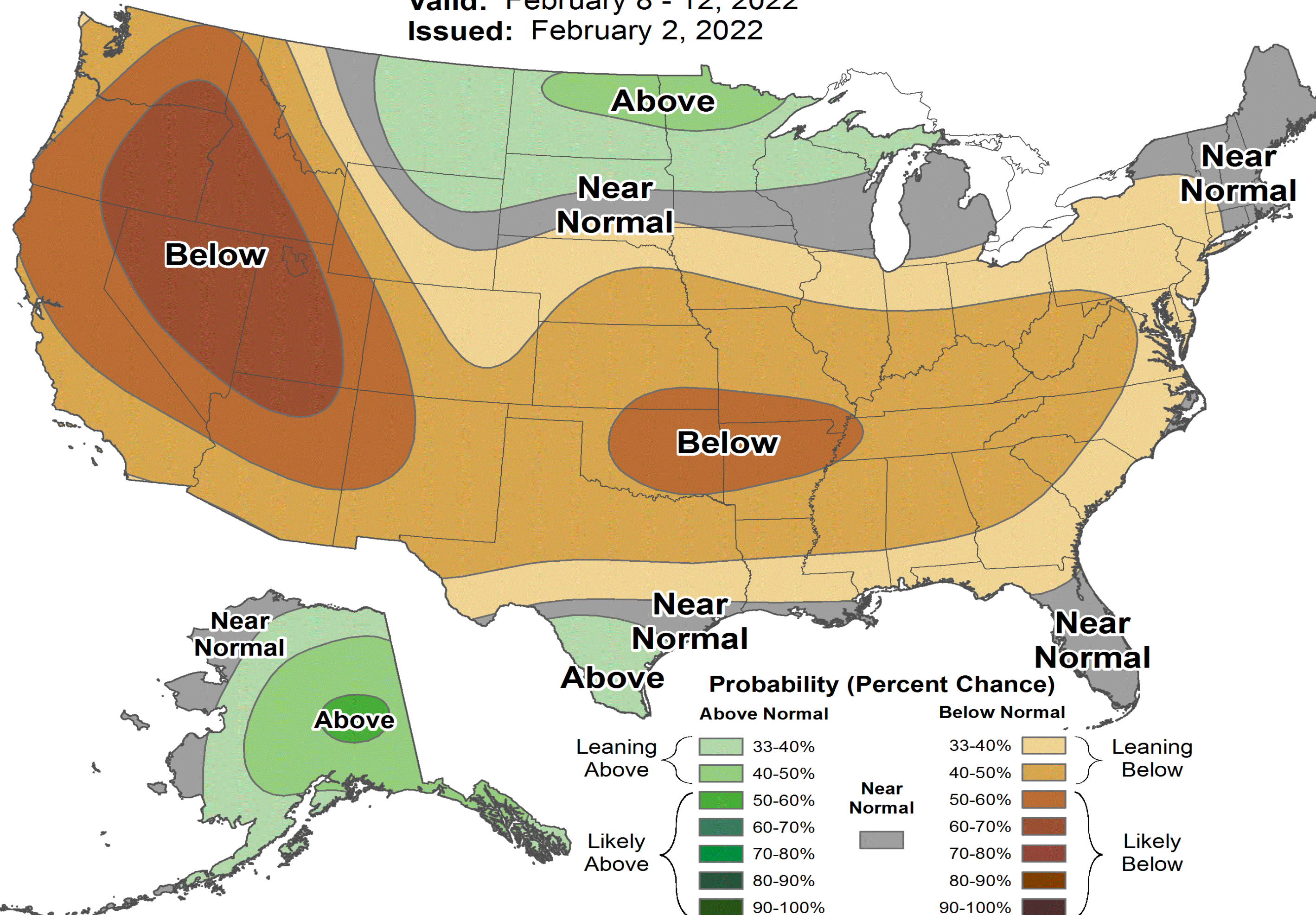
National Weather Service
New Orleans/Baton Rouge



6-10 Day Precipitation Outlook



Valid: February 8 - 12, 2022
Issued: February 2, 2022



- Dry weather is expected this weekend and into next week



- **Changes since previous update:**
 - Severe weather, maybe a brief isolated tornado possible for Mississippi counties through the afternoon
 - Heavy rainfall and flash flooding will continue to be a concern areas near Lake Pontchartrain and eastward
 - River flooding is not anticipated to be a concern due to antecedent conditions
- There could be a brief sleet mix north of Baton Rouge, no accumulations or significant impacts expected
- Cold temperatures at night through the weekend



Questions?

Contact WFO New Orleans at
504-522-7330 or 985-649-0429
or through the “LIXchat” NWSChatroom

Get the latest forecast and hazard information at www.weather.gov/neworleans



NWSNewOrleans

www.weather.gov/NewOrleans