



SEVERE WEATHER BRIEFING

7:00 AM CDT
Tuesday, April 5, 2022

Prepared by:
NWS New Orleans/Baton Rouge



Situation Overview

- Damaging wind gusts and a few tornadoes will be possible this morning and into the early afternoon hours, ending from west to east. A tornado watch is in effect the entire forecast area and a flood watch is in effect until this afternoon for areas generally north of the I-10/12 corridor, including the Mississippi Gulf Coast.
- As the system pushes through, some of the thunderstorms may produce rainfall rates that could lead to some localized flooding issues.
- The expected highest threat for the area is beginning now and will push across the area from west to east this morning and into the early afternoon hours.



Current Watches and Warnings



- A tornado watch is now in effect for the entire forecast area until at least 11AM CDT. Damaging wind gusts and a few tornadoes will be the primary threat today.
- Damage to trees and powerlines, which could lead to power outages, will be possible.
- The highest risk is generally north of the I-10/12 corridor and east of I-55. That said, anywhere in our area could see severe weather.



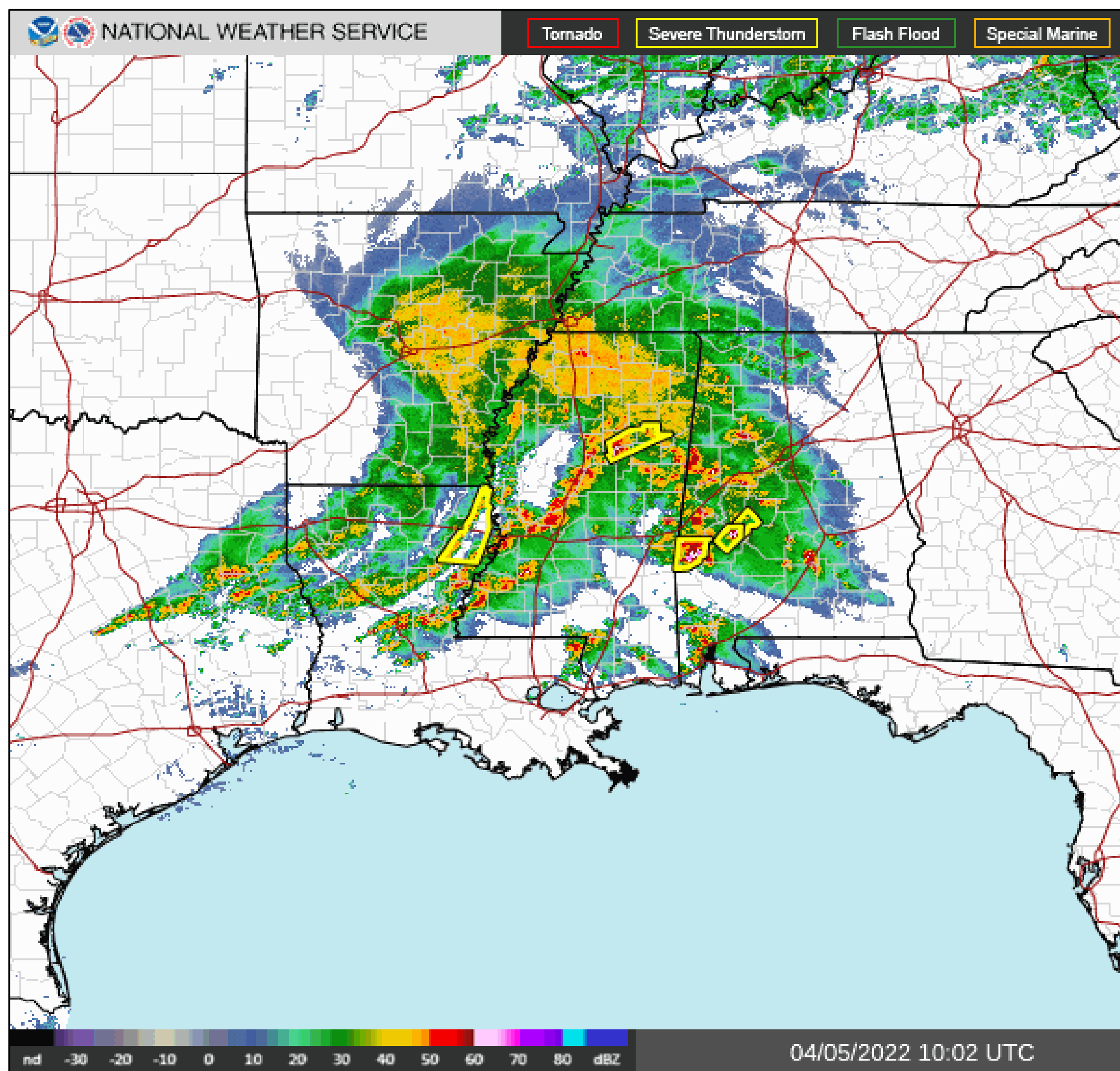
Current Watches and Warnings



- A flood watch is in effect for the northern part of the area, generally north of I-10, including the Mississippi Gulf Coast.
- Some of the stronger storms today will be capable of high hourly rainfall rates of 3 to 4 inches per hour.
- This could lead to some ponding of water on roadways and in low drainage areas.



Current Radar

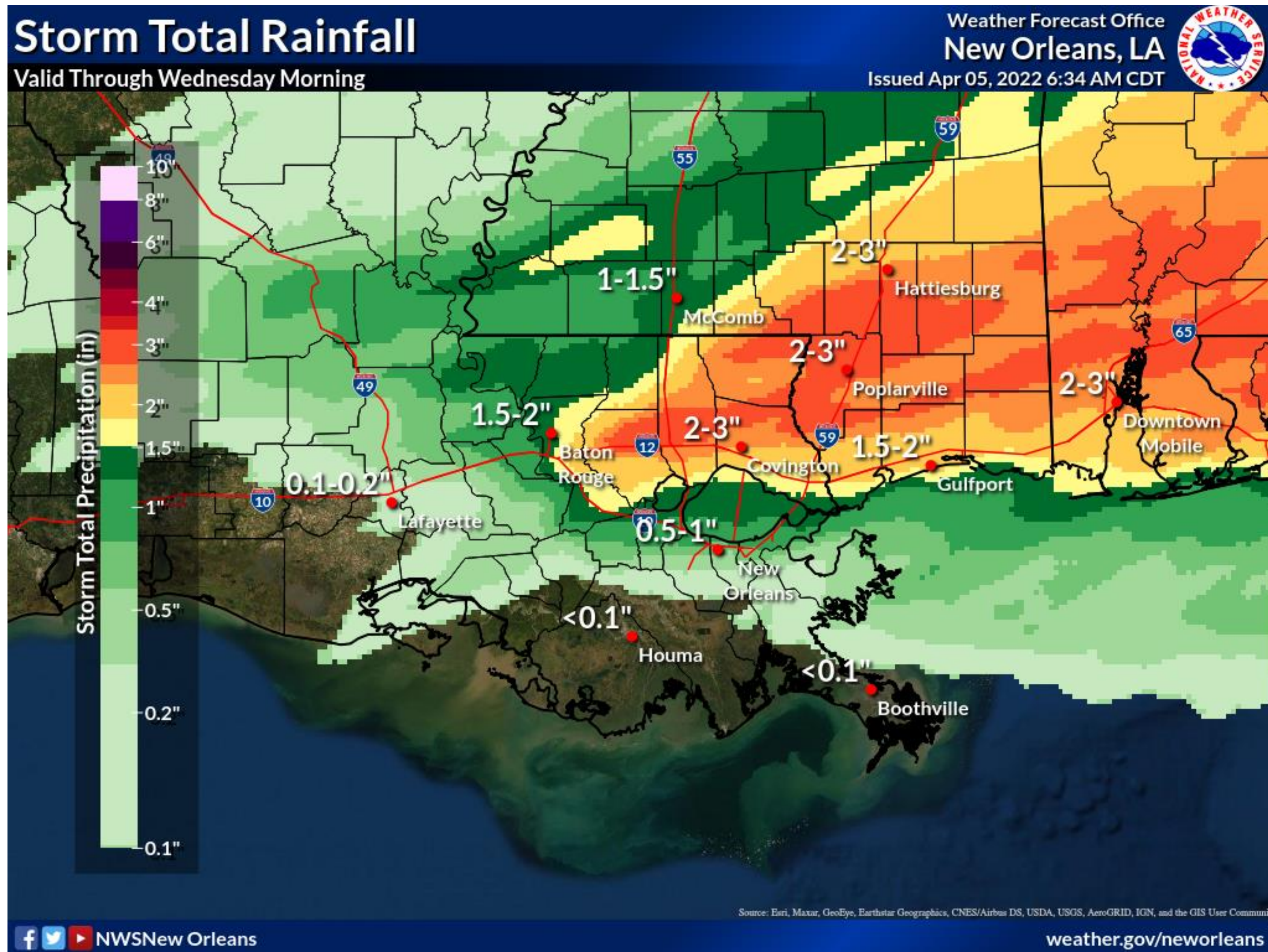


- A line of heavy thunderstorms is moving through central Louisiana this morning.
- Additional showers and thunderstorms are expected to develop out ahead of the line.
- Some of these thunderstorms have produced wind gusts in excess of 60 mph and small hail in eastern Texas and northwest Louisiana as they moved through those areas.



Storm Total Rainfall Forecast

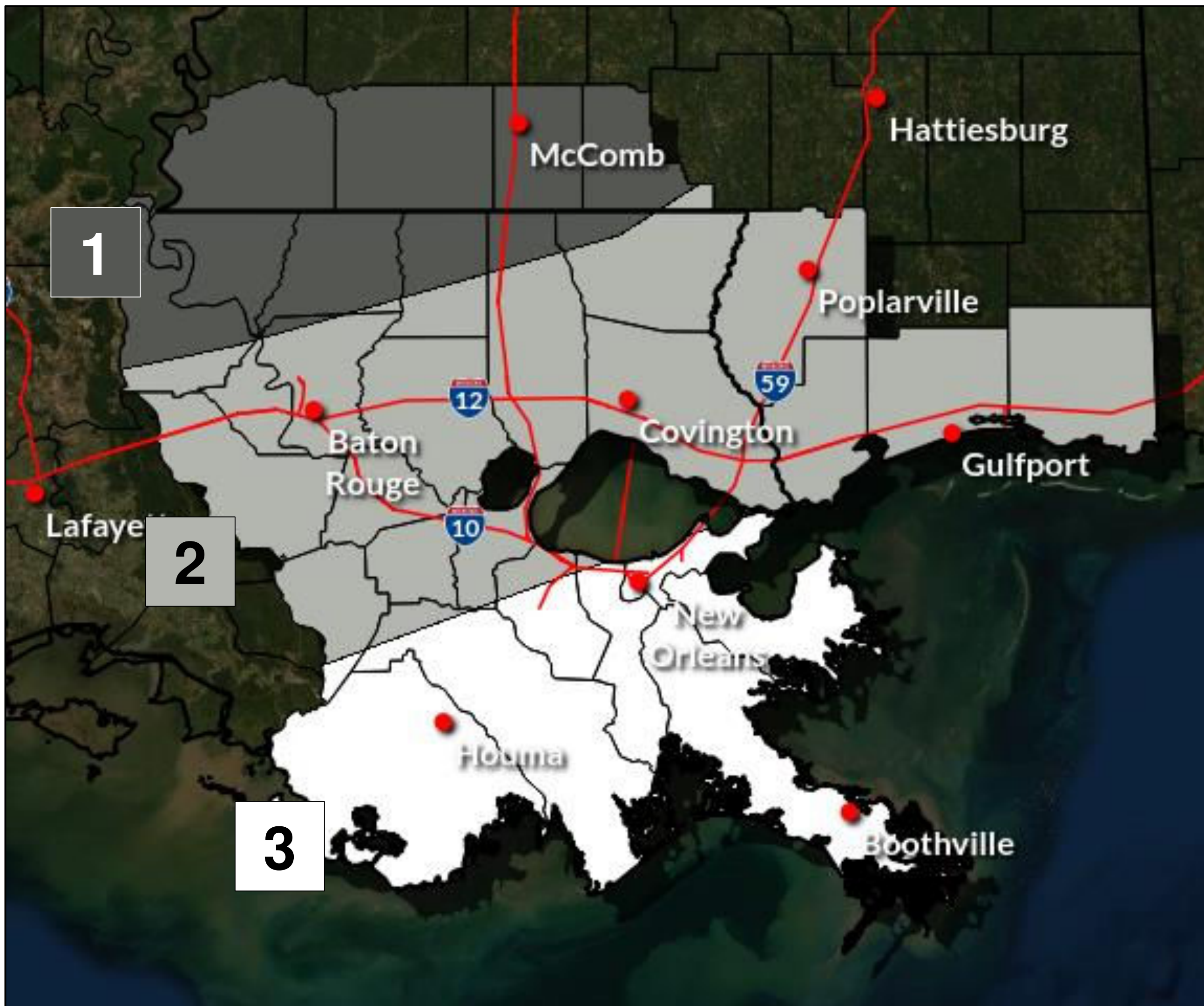
Valid through Wednesday Morning



- Average rainfall amounts of 2-3 inches, with locally higher amounts are possible.
- There will likely be a significant gradient in rainfall amounts where some areas may see more rain than others.
- Ponding of water on roadways and in areas of poor drainage are possible.
- The heavy rainfall threat will last through the morning hours, ending from west to east, and could extend into the early afternoon hours along the Mississippi Gulf Coast.



Timing – Likely Onset of Impacts Today



1	Now
2	7AM-10AM
3	10AM-1PM



Summary of Impacts

- Damaging wind gusts and a few tornadoes will be possible this morning and into the early afternoon hours, ending from west to east. A tornado watch is in effect until 11AM CDT for most of the area and a flood watch is in effect until this afternoon for areas generally north of the I-10/12 corridor, including the Mississippi Gulf Coast.
- As the system pushes through, some of the thunderstorms may produce rainfall rates that could lead to some localized flooding issues.
- The expected highest threat for the area is beginning now and will push across the area from west to east this morning and into the early afternoon hours.
- A chance for severe weather returns tomorrow afternoon. Additional information will be sent regarding this threat this afternoon.



Questions?

Contact WFO New Orleans at
504-522-7330 or 985-649-0429
or through the “LIXchat” NWSChatroom

*Get the latest forecast and hazard information at
www.weather.gov/neworleans*