

SEVERE WEATHER BRIEFING

7:00 AM CDT
Tuesday, March 22, 2022

Prepared by:
NWS New Orleans/Baton Rouge

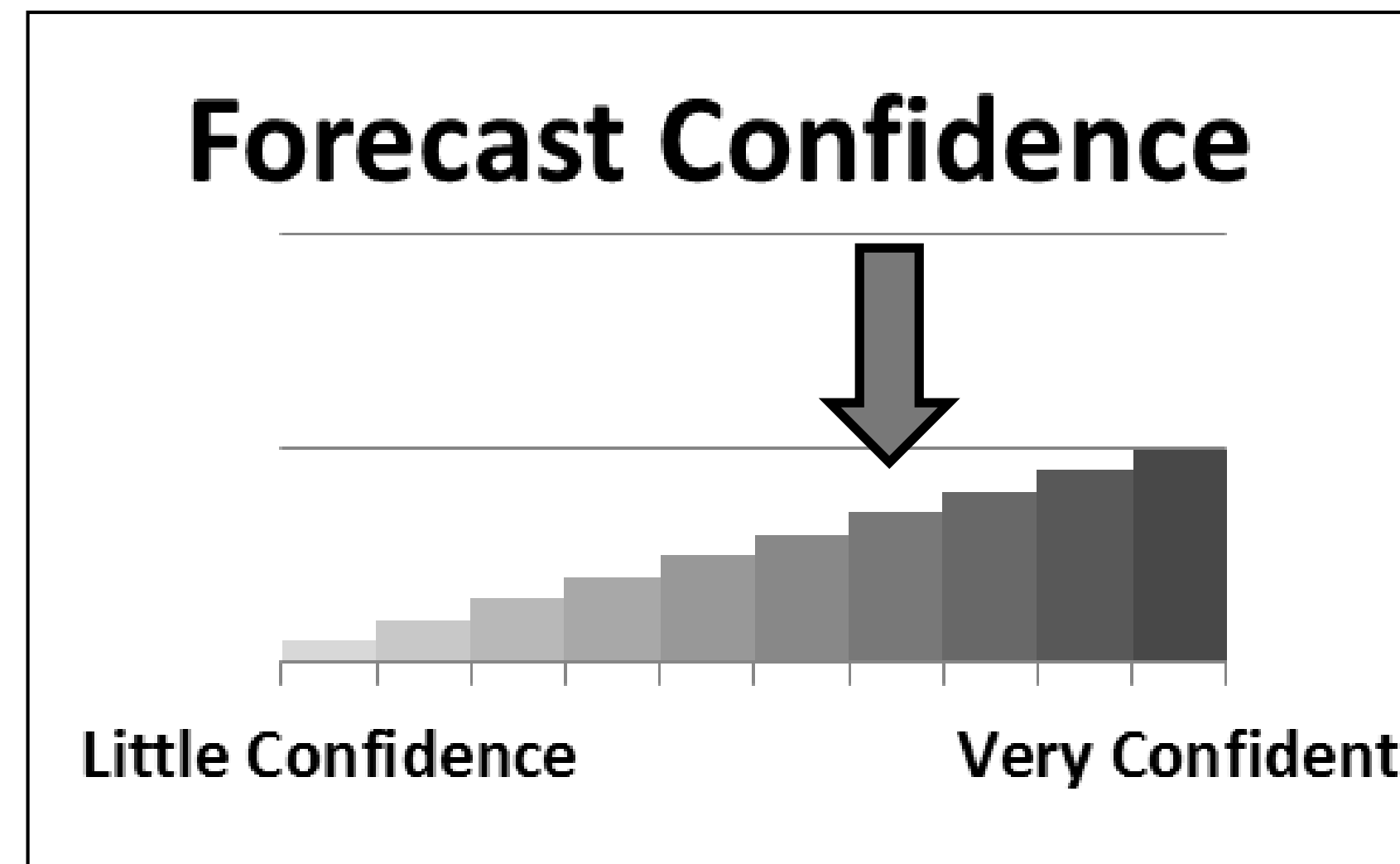
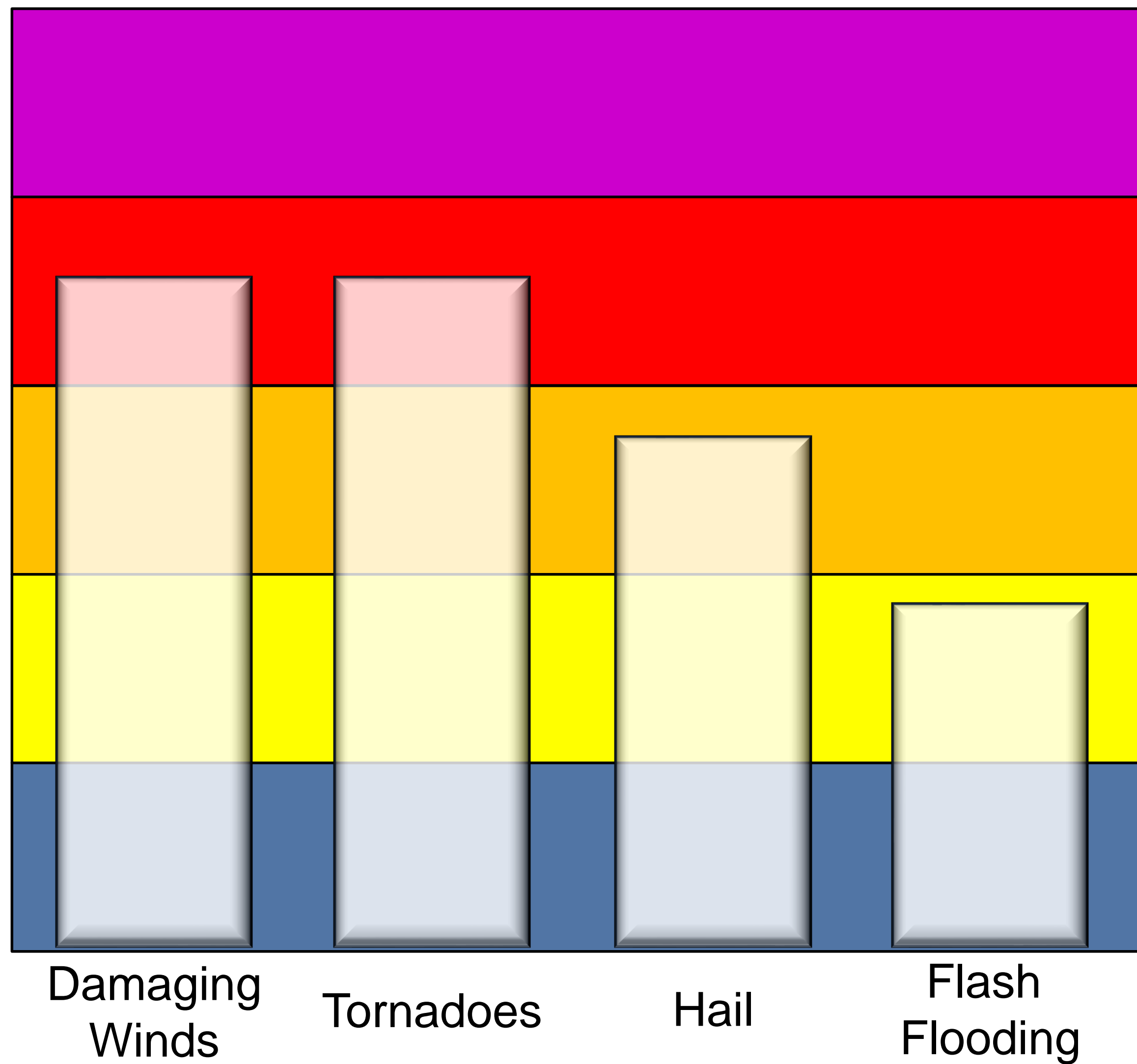


Situation Overview

- There is a moderate risk of severe storms this afternoon and evening
 - A few tornadoes (possibly EF2+) and strong damaging winds are the main threats
 - Large hail will be possible as well
- Flash Flood Watch in effect today for areas along and north of I-10.
 - 1-3 inches of rainfall expected with locally higher amounts up to 5" possible
- Wind Advisory and Coastal Flood Advisory in effect today
 - Sustained winds will be 20-25 mph gusting 35-45 ahead and behind the system
 - Tides will be 1-2 ft above normal today along the LA and MS coastal areas



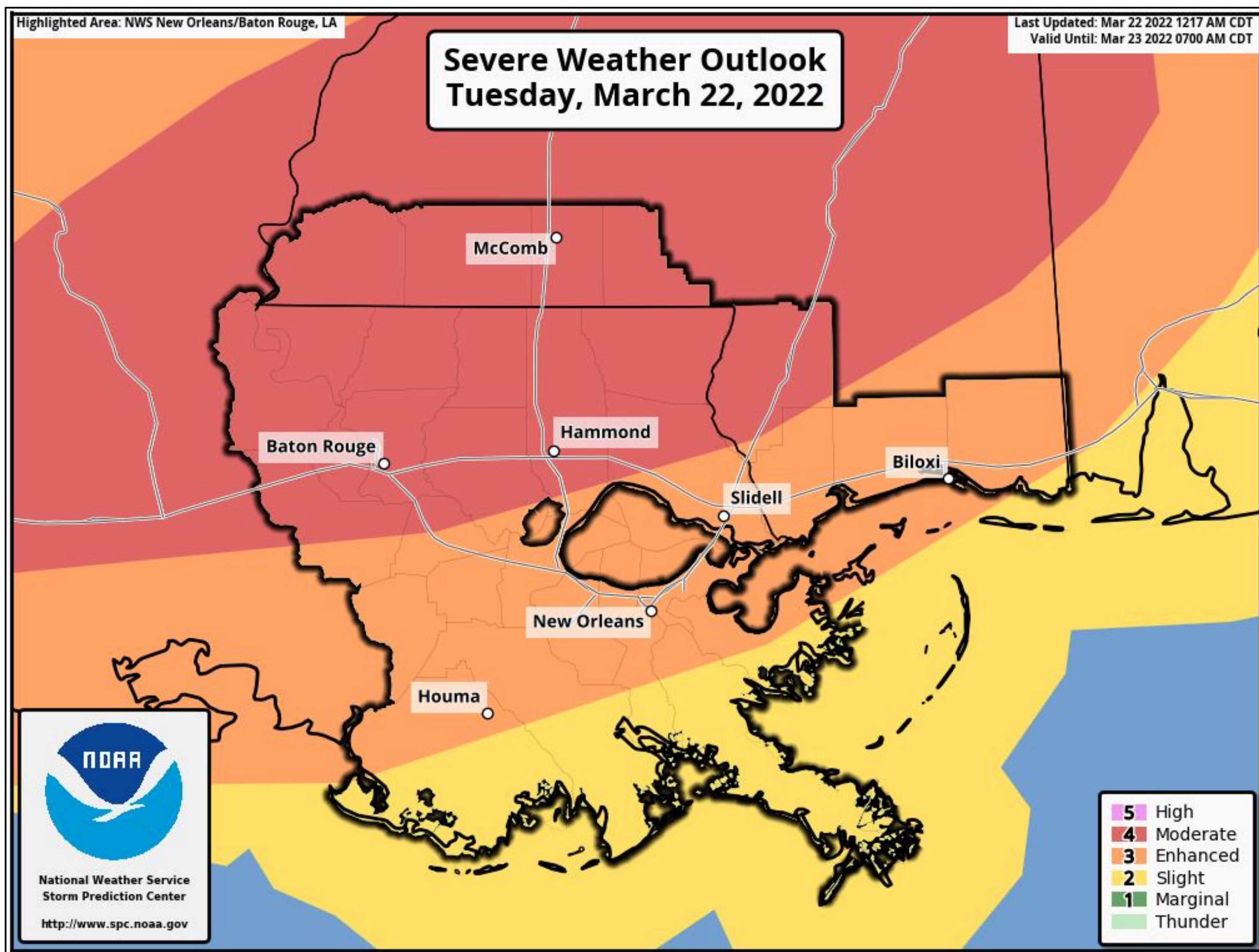
Threat Levels



We have medium-high confidence in the severe weather and flash flood potential associated with a squall line moving eastward this afternoon and evening. Confidence in coverage, intensity, and location of additional storms (supercells) just ahead of this line is much lower. It is these initial supercell storms that would have the greatest potential to produce significant, long-track tornadoes.



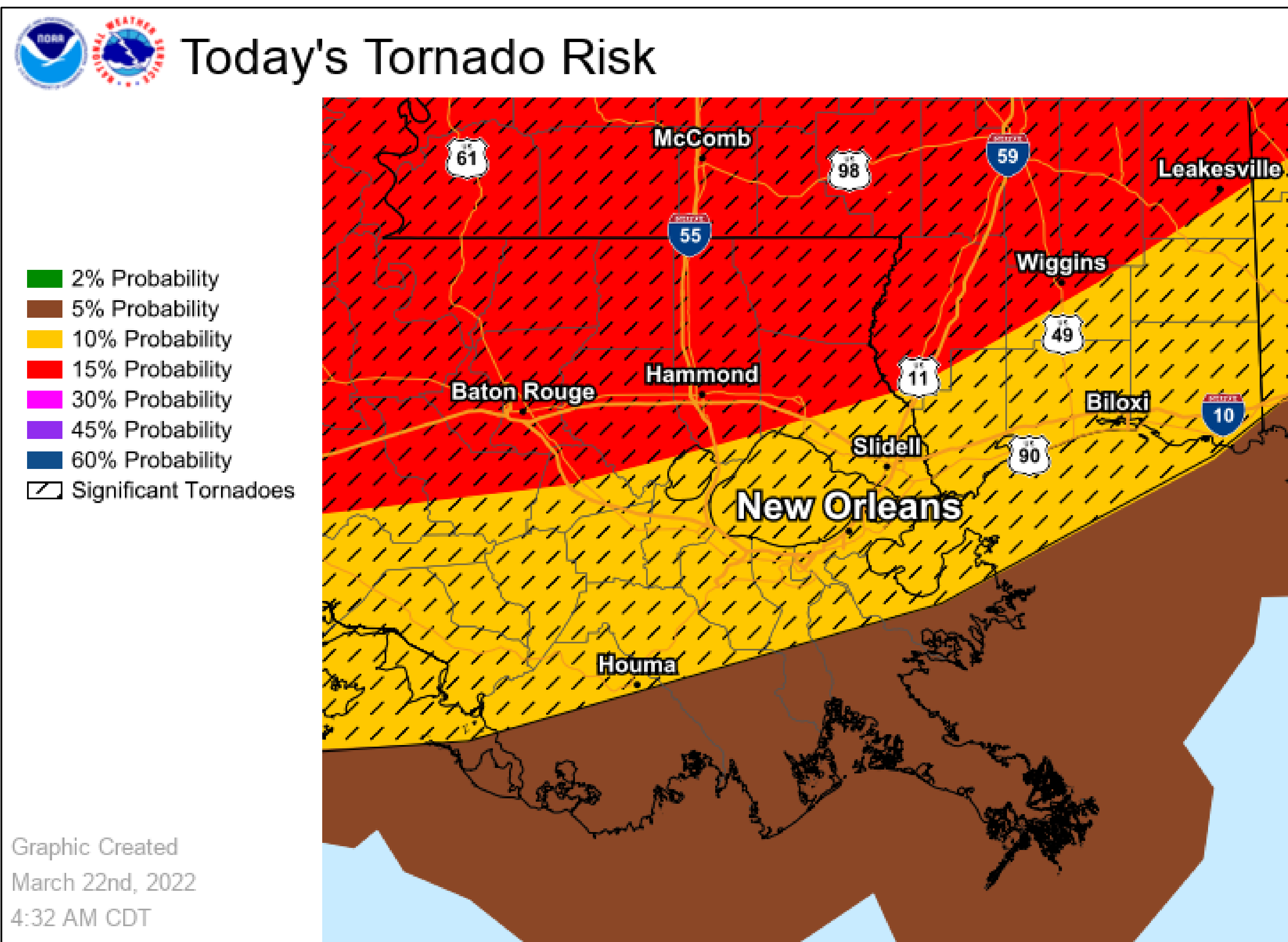
Severe Weather Outlook – Today



- Enhanced to moderate risk for severe thunderstorms today
- Greatest threats will be damaging winds and tornadoes, but large hail also possible
- Greatest risk north of I-10
- Risk peaks this afternoon and evening when a squall line is expected to move eastward through the region



Today's Tornado Risk

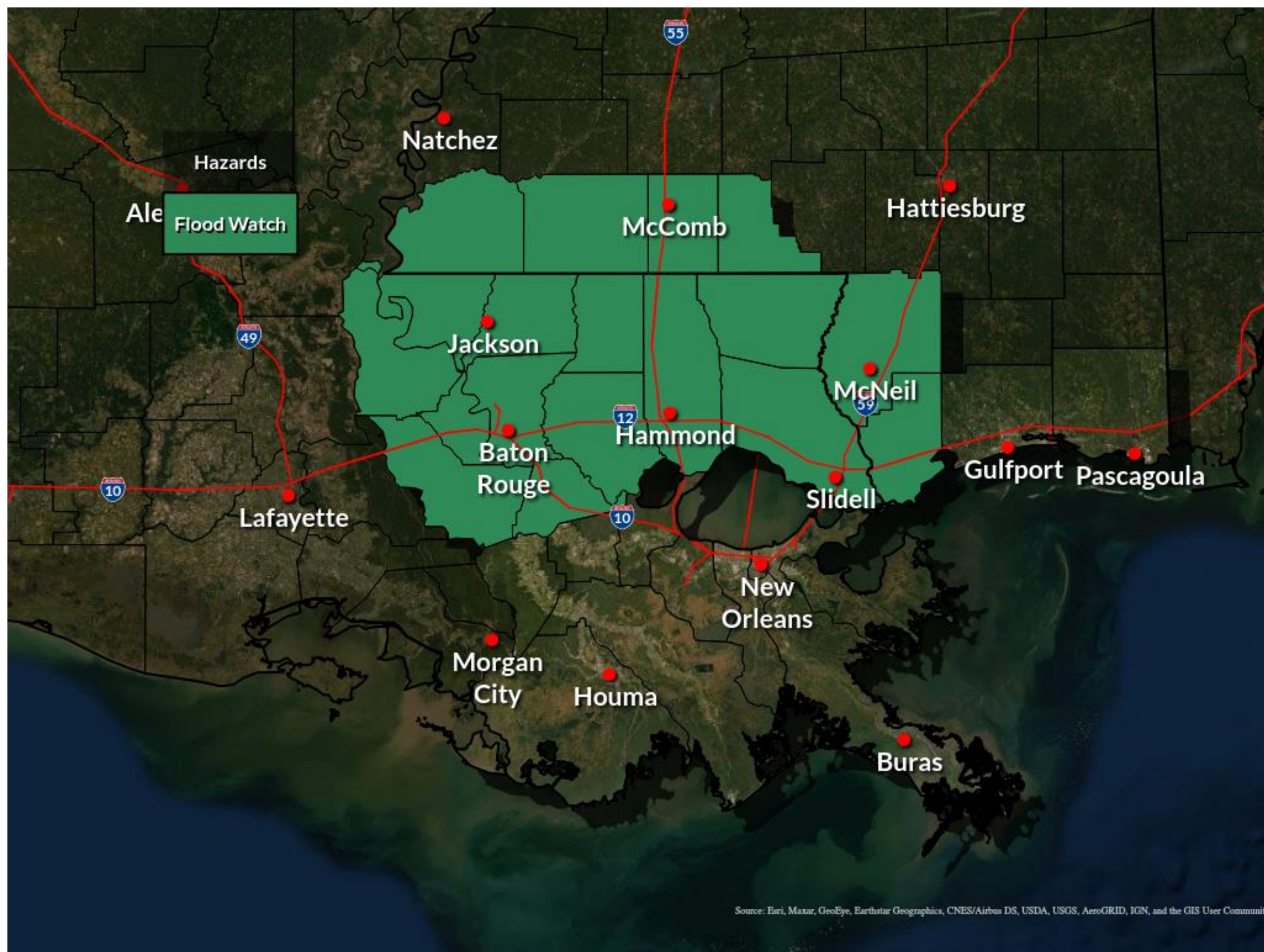


- Significant (EF2+) and long track tornadoes possible
- Greatest tornado threat will be along and north of I-12 during the afternoon and early evening hours



Flash Flood Watch

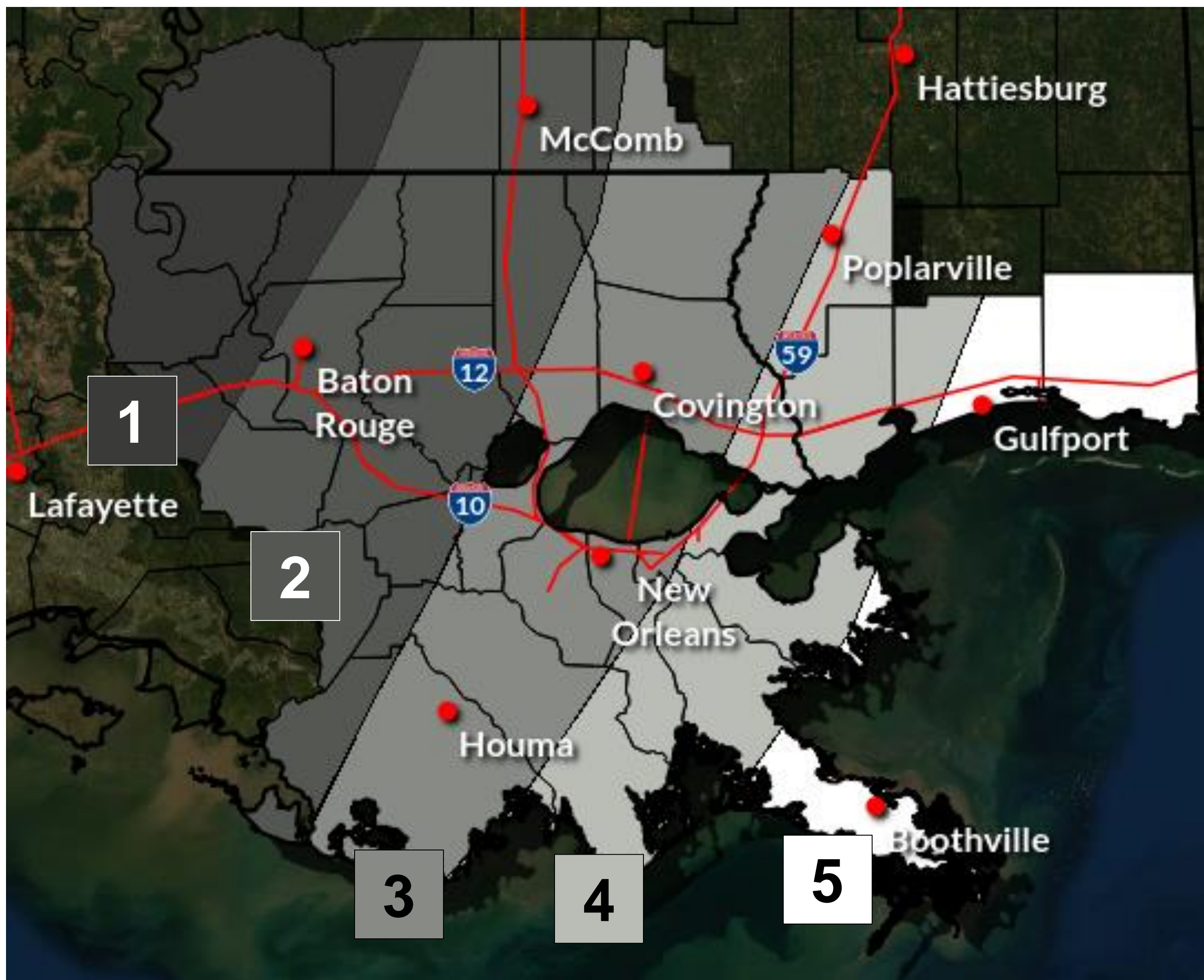
Today



- Flash Flood Watch is in effect through this evening for portions of southeast LA and southwest MS.
- Rainfall of 1-3” with isolated higher amounts up to 5” could produce localized flooding issues, especially street flooding in low-lying and poor drainage areas.
- Most of this rainfall will occur in a short period (1-3 hours) with a line of storms this afternoon and early evening. Rainfall rates up to 5” per hour are possible with any storms.



Timing of Severe Storms and Flooding Rainfall Today



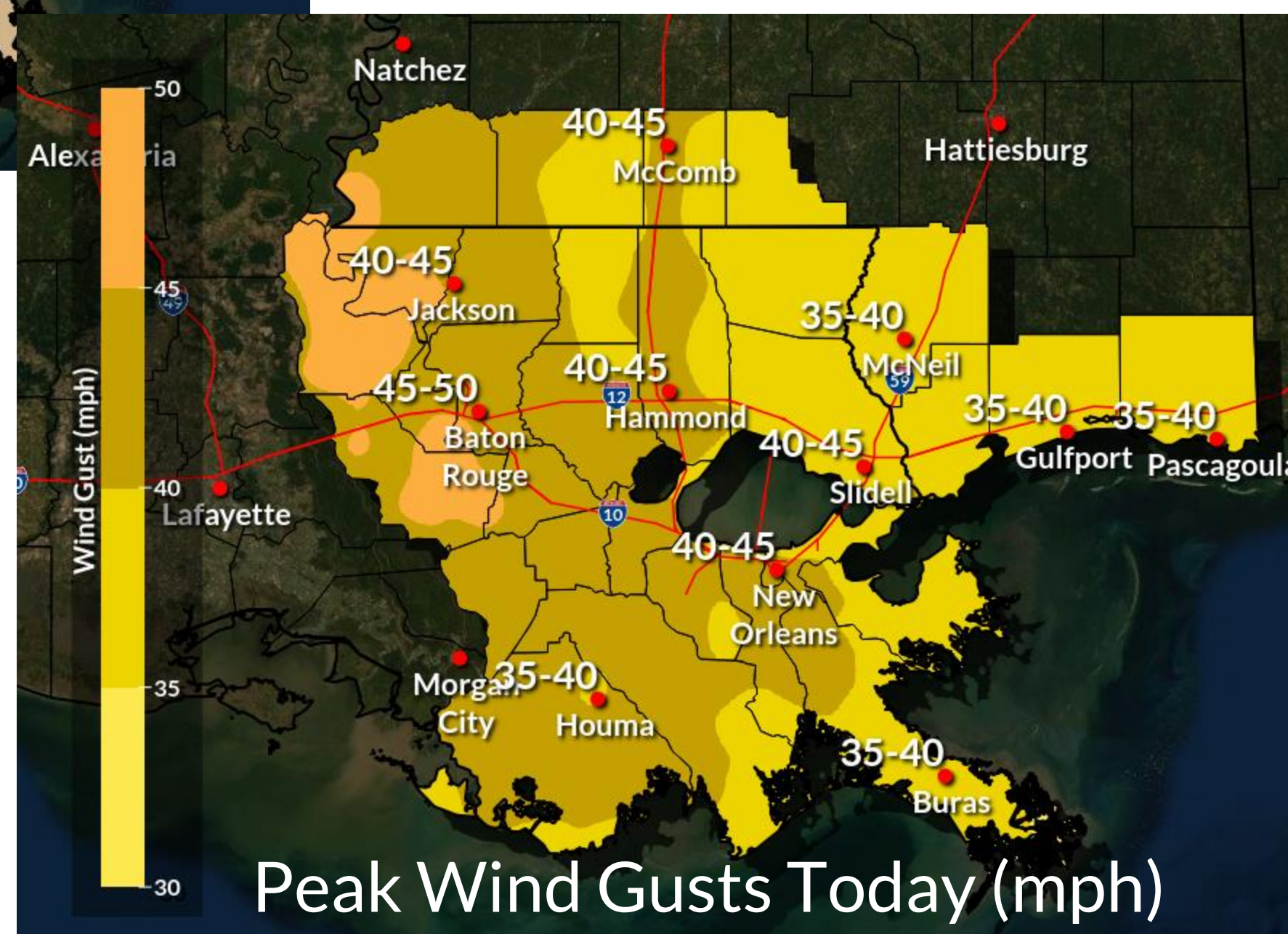
Severe storms and flooding rainfall most likely between:

1	12 PM and 4 PM
2	2 PM and 6 PM
3	4 PM and 8 PM
4	6 PM and 10 PM
5	8 PM and 12 AM



Strong Winds

Wind Advisory in Effect Today



- Wind Advisory in effect from 9 AM to 9 PM today.
- Outside of thunderstorms, strong southerly winds 20-25 mph with gusts of 35-45 mph are expected across the area.
- The strongest winds are expected late this morning and afternoon.
- Gusty winds could blow around unsecured objects. Tree limbs could be blown down and a few power outages may result.



Summary of Impacts

- Enhanced to moderate risk of severe thunderstorms this afternoon and evening.
 - Tornadoes, damaging wind gusts, and large hail will be possible from severe storms that form.
 - Greatest risk along and north of I-12 this evening this afternoon and evening when a squall line moves eastward through the region.
 - Additional storms just ahead of this line would have the greatest potential to produce significant, long-track tornadoes, but there is still high uncertainty if and where these storms develop.
- Flash Flood Watch in effect today for areas along and north of I-10.
 - Rainfall of 1-3" with isolated 5" in a short period of time could produce localized flooding issues.
- Wind Advisory and Coastal Flood Advisory in effect today.
 - Strong southerly winds gusting to 45 mph in advance of the severe storms.
 - Minor coastal inundation of 1-2 feet above ground level on south-/east-facing shores.



Questions?

Contact WFO New Orleans at
504-522-7330 or 985-649-0429
or through the “LIXchat” NWSChatroom

*Get the latest forecast and hazard information at
www.weather.gov/neworleans*